

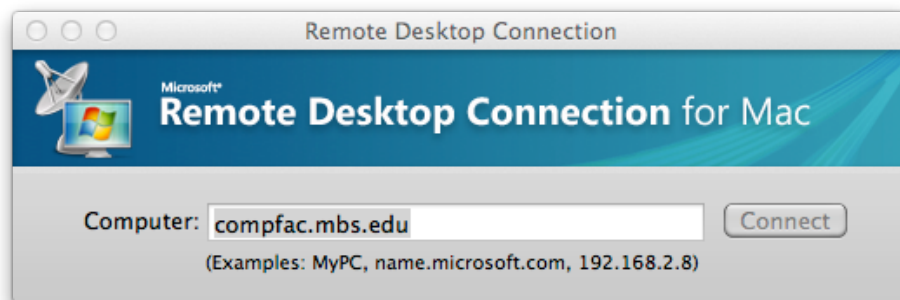
# Connecting your Mac to the Computational Facility

Download the Mac Remote Desktop Client Software from here:

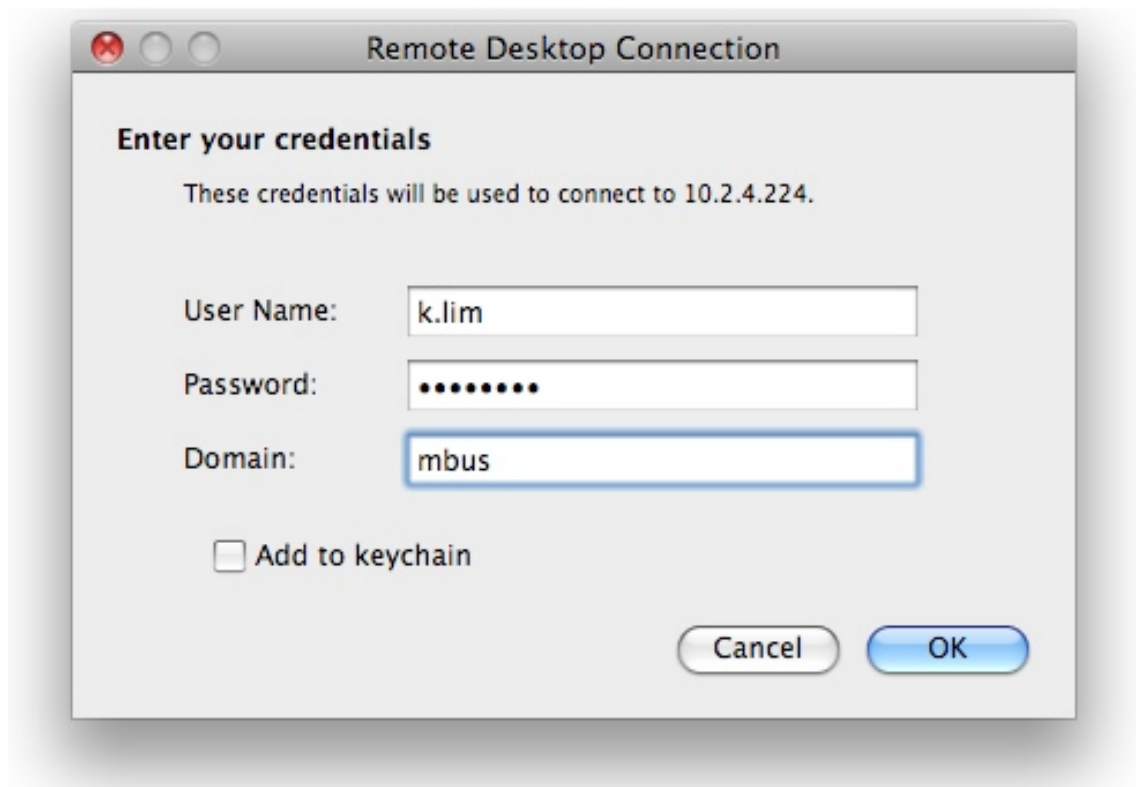
<http://www.microsoft.com/mac/remote-desktop-client>

Install the software by double-clicking on the DMG file you downloaded. This will add a program called “Remote Desktop Connection” to your Applications Folder.

Double-click on Remote Desktop Connection in your Applications Folder. Type in the address of the MBS computational server: `compfac.mbs.edu`



Click Connect. Enter your MBS Username, Password and change the Domain to “mbus”. Click OK.



If you get a message saying that the identity of the computer you want to connect to cannot be verified, just ignore it and click “yes”. You should then be logged in. Enjoy.

It is optional but highly recommended that you set the display size to **1280x1024** (or higher). The setting is available if you click <RDC><Preferences>

